

Intumescent pipe collars - MT2

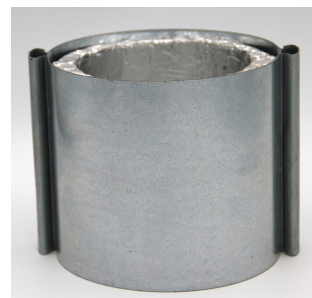
Fire stop collars are applied where synthetic pipes cross floors, walls and / or firewalls. During a fire, the intumescent product inside the barrel swells and completely closes the hose. This will prevent the spread of smoke and fire in areas around fire compartments.

The collar MT2 completely closes the synthetic pipes. The collars MT2 must be placed recessed. The placement is very easy and quick, even in places with little space.

T-Ei collars are tested in concrete walls, light partitions and Rockwool partitions according to the European standards currently in force 1366-3, ETAG 026-4: 2008, EN1364-1 / 2015 EN FPRen1364-5: 2017

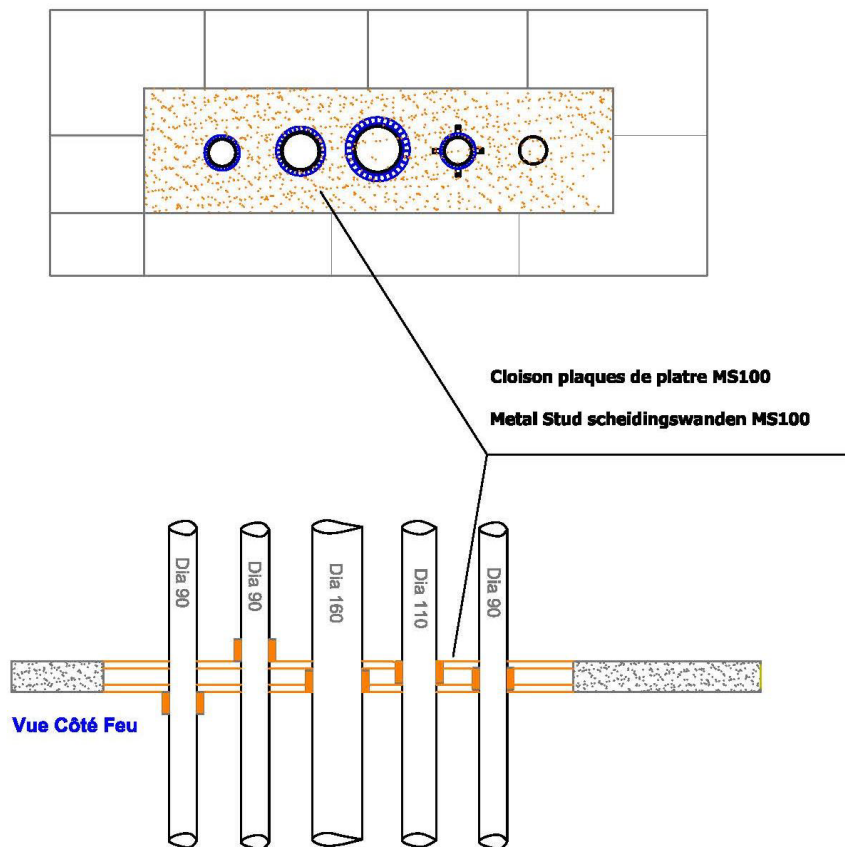
The MT2 recessed collar has a height of 110mm. The collar consists of a 0.60mm steel sheath provided with an intumescent product - 2mm thick covered by an aluminum tape for protection against humidity. The intumescent product is fixed and calculated according to each diameter in order to compress the PVC and PP pipe to 100%.

The MT2 collar is placed around the synthetic pipe. It must be recessed. Easy placement by removing the slides, opening the sleeve, placing on the pipe and replacing the slides. The free air passage is 100% and the fire resistance can go up to 120min.



MT2	A Int. Ø	B Ext. Ø	H
MT2-040	40	76	110
MT2-050	50	100	110
MT2-056	56	105	110
MT2-063	63	105	110
MT2-075	75	113	110
MT2-090	90	140	110
MT2-110	110	160	110
MT2-125	125	175	110
MT2-160	160	225	110

Placement in a MS100 partition



Placement in cellular concret and rockwool wall

